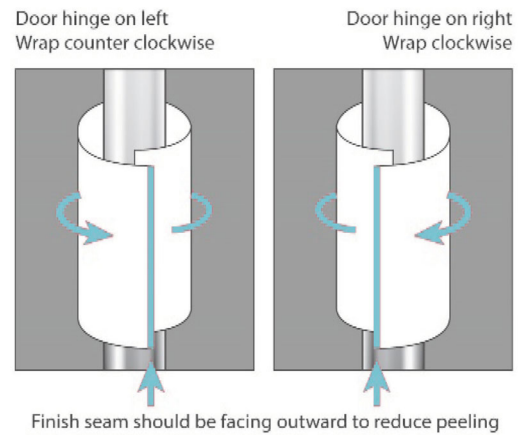


Installing Nanotouch Wraps

Wraps are easy to install...just peel and stick. If you notice bubbles or wrinkles, or the wrap is a little crooked, no worries. Just remove and try again. While they are easy to install, here are some helpful suggestions that will make sure your Nanotouch wraps look great and adhere properly.

- Be sure to wash your hands before applying.
- **Clean the area for installation. Make sure there is no residue or filmy substance remaining after cleaning.**
- When applying, start with a top edge and work down or start in the middle and smooth outward. **Having a consistent application without bubbles and wrinkles is essential to ensure the best adhesion.**
- Apply push pad wraps directly on the door rather than trying to cover the stainless steel plate if there is one.
- **Apply surfaces at the end of the day or when the least amount of activity will take place after installation**, to provide the most amount of time for the re-positionable adhesive to cure.
- **Re-press the edges of the wraps 2 hours after installation** to ensure best seal on seams.
- When applying handle wraps for vertical handles, install clockwise if the door hinge is on your right, and counter clockwise if the hinge is on your left. Also, the overlapping edge of the wrap should be facing outward, where it will get the least amount of friction.
- The smaller the diameter of the door handle, the more the material has to bend and the higher the likelihood that the edge may initially come up. For smaller diameter handles, resealing the finished edge more than once over time will lead to better adhesion long term.
- Do not apply adhesive backed wraps to unfinished, stained or varnished wood, painted surfaces, or other non-durable surfaces. Smooth durable materials like plastic or metal are best. When in doubt, apply the wrap to a small test area.



Cleaning Nanotouch Wraps

Nanotouch products are waterproof and easily cleaned. While the Nanotouch surface is self-cleaning at a microscopic level, it can still become soiled or stained from dirt and other larger scale contaminants.

- Use soft cleaning materials or microfiber cloths.
- DO NOT use abrasive cleaning materials or abrasive cleaners.
- When wiping the surface, do not wipe in a way that peels up the edge of the wrap. Wipe from inside out, if possible.

Replacing Nanotouch Wraps

Nanotouch products do not expire and are limited only by wear caused by contact. People feel better about a surface that looks clean and fresh, so we recommend a regular replacement schedule of 90 days.

- **Wear Indicator:** high traffic touchpoints may need to be replaced sooner than 90 days. If the graphics or print becomes worn, scratched or faded, the surface should be replaced.
- If a wrap starts to peel up and will not stay adhered reliably, the surface should be replaced.
- If a wrap becomes stained or heavily soiled, making cleaning difficult, the surface should be replaced.
- When removing, peel off slowly to reduce the amount of adhesive residue.
- Wraps that have been up for an extended period of time or are in extreme hot/cold or humid environments may leave more adhesive residue.
- To remove adhesive residue, the best product is Goo Gone. Once complete, clean the surface with soap and water, or Windex, and let dry before replacing the wrap.

Care of Nanotouch Mats

Just like the touchpoint wraps, our mats can be cleaned.

- Mats have a useful life of about 1 year.

Replacement is easy when you

REPLACE ON TIME!

Replacing adhesive-back products every 90 days not only keeps your touchpoints working at full strength, it also makes it easier to remove with very little if any residue. So for a cleaner facility and easier removal **replace on time!**